

Document ID# 1775566
2004 Cadillac CTS

Info - 5L40-E/5L50-E Automatic Transmission Service Parts and Labor Operation Codes for Transmission Internal Service and Overhaul #05-07-30-010B - (Mar 6, 2006)

5L40-E/5L50-E Automatic Transmission Service Parts and Labor Operation Codes For Transmission Internal Service and Overhaul

2003-2007 Cadillac CTS

2004-2007 Cadillac SRX, XLR

2005-2007 Cadillac STS

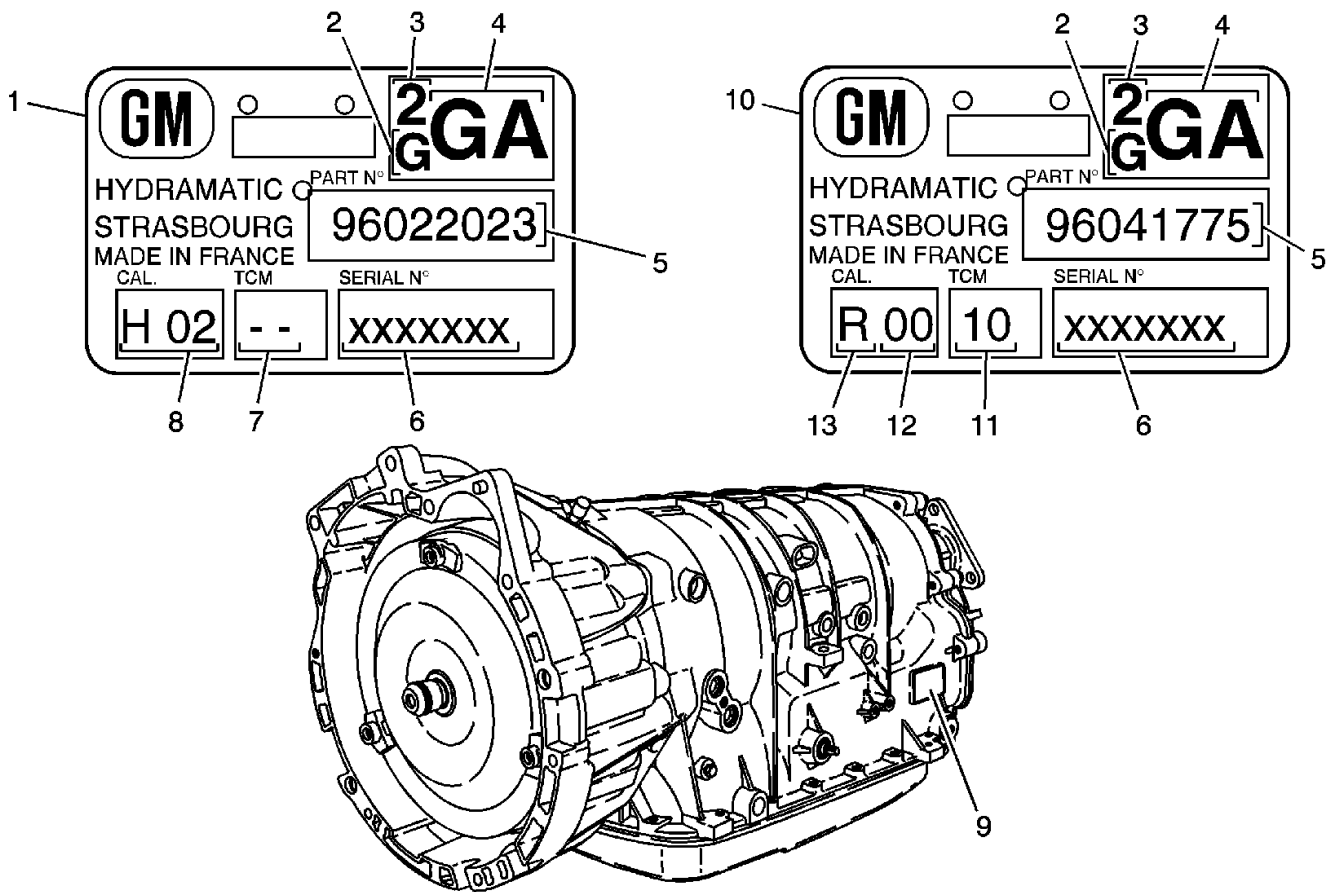
2006-2007 Pontiac Solstice

2007 Saturn Sky

with 5L40-E/5L50-E Automatic Transmission

This bulletin is being revised to include the 2007 model year as well as the Pontiac Solstice and Saturn Sky and revise the application chart. Please discard Corporate Bulletin Number 05-07-30-010A (Section 07 -- Transmission/Transaxle).

[Transmission ID and VIN Derivative Location](#)



Important: Always check the transmission ID before performing internal repairs.

5L40E / 50E Automatic Transmission Full Service Chart

Brand	Platform	Engine	2003	2004	2005	2006	2007
Cadillac	CTS	2.6L (M)	*3GBG	4GBG			
		3.2L (N)	*3GBG	*4GBG			
		2.8L (T)			5GNG	6GNG	6GNG
		3.6L (7)		4GLG	5GLG	6GLG	6GLG
	SRX with RWD	3.6 (L)		4GRG	5GRG	6GRG	6GRG
		4.6L (A)		3GDZ	5GDZ	6GDZ	
	SRX with AWD	3.6L (L)		4GGG	5GGG	6GGG	6GGG
		4.6L (A)		3GFZ	5GFZ	6GFZ	
	STS with RWD	3.6L (7)			5GLG	6GLG	6GLG
		4.6L (A)			5GDZ	6GDZ	

	STS with AWD	3.6L (7)				6GUG	6GUG
		4.6L (A)			5GFZ	6GFZ	
	XLR	4.6L (A)		3GKZ	5GKZ	5GKZ	
Pontiac	Solstice	2.0L (P)				7GTG	7GTG
		2.4L (B)				7GSG	7GSG
Saturn	Sky	2.0L (P)					7GTG
		2.4L (B)					7GSG

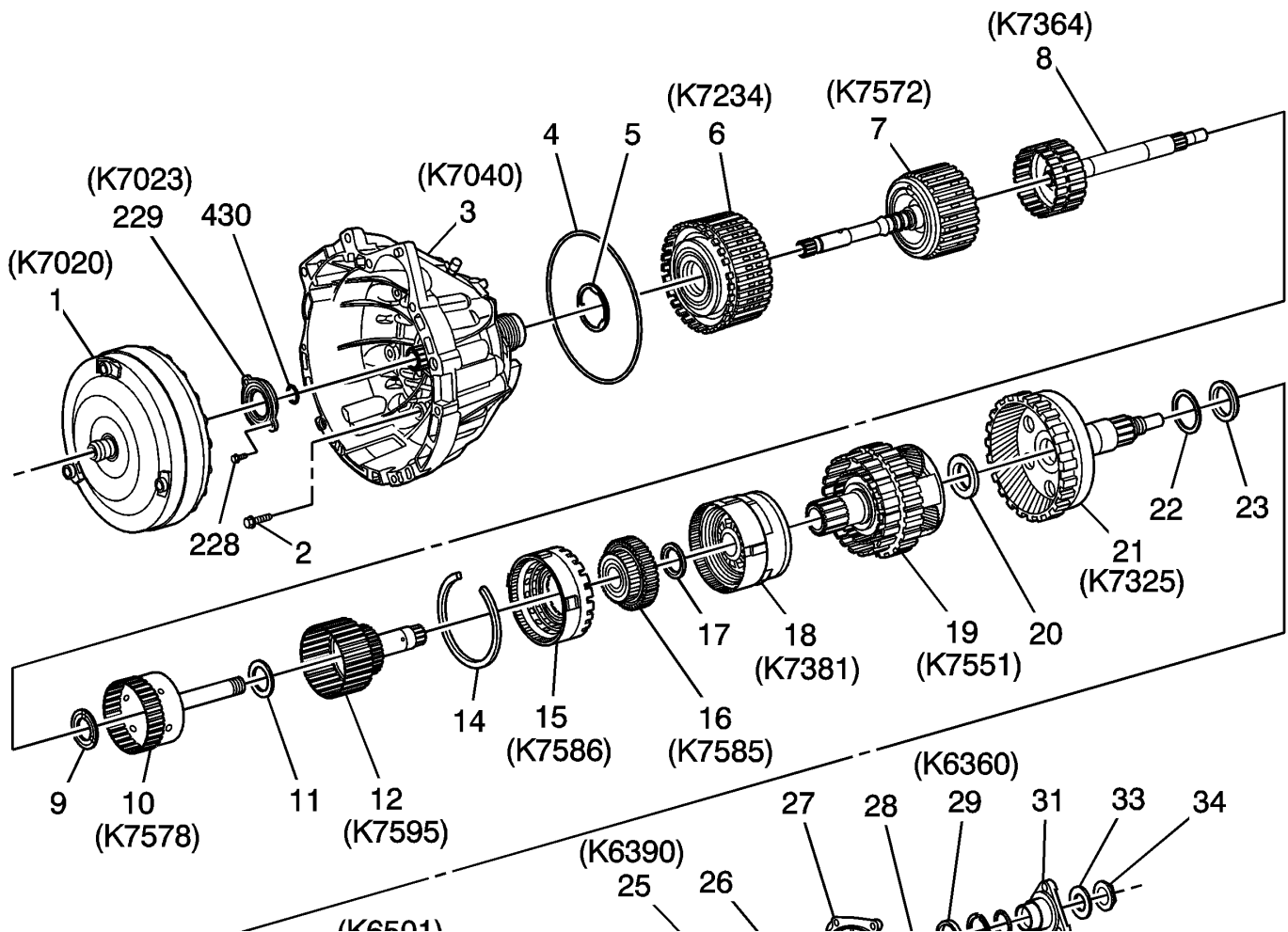
*3GBG unit can be serviced with 4GBG unit assembly and/or components

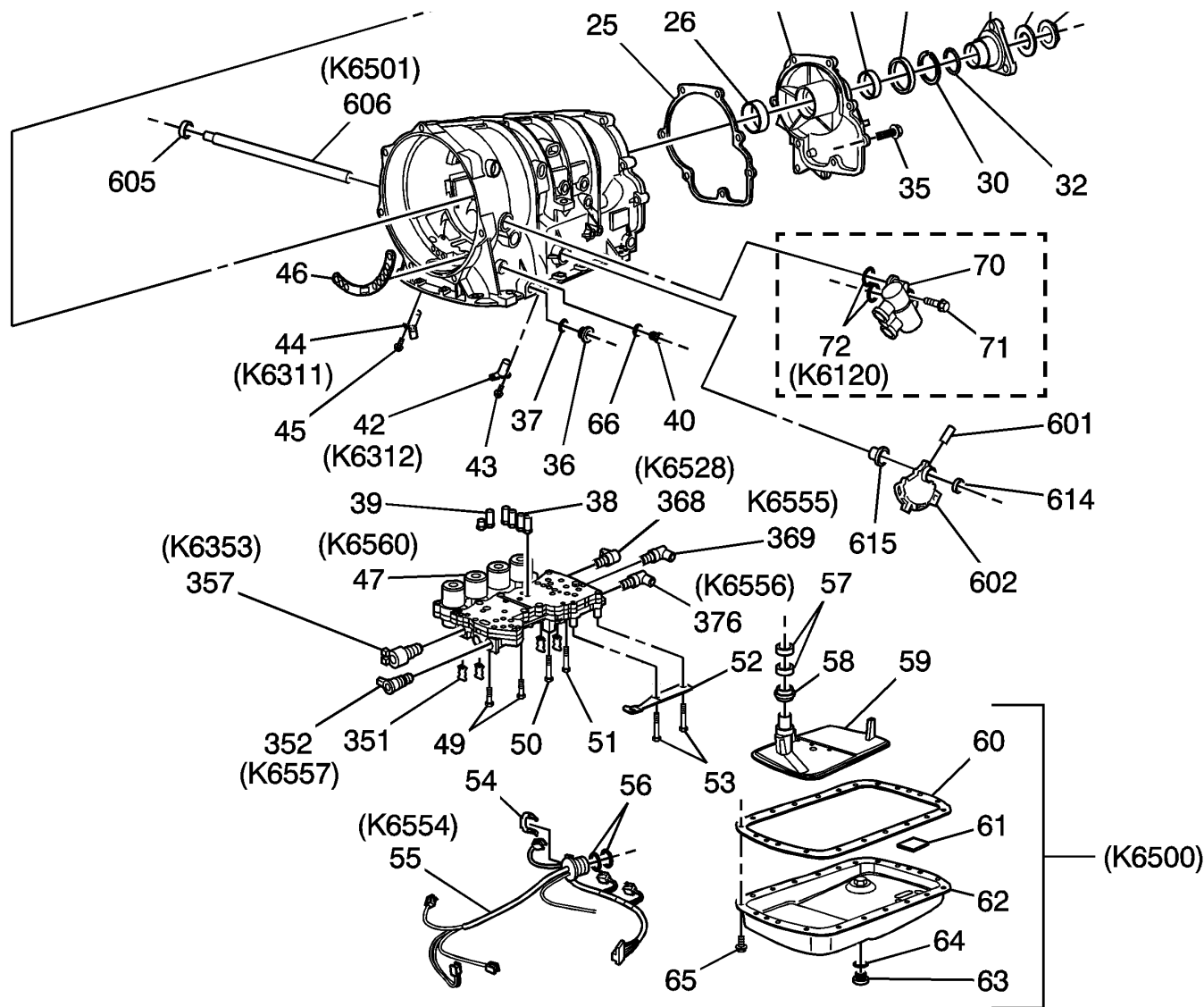
The above chart does not include STS-V and XLR-V models with 6L80 Automatic Transmission

Full service for 5L40-E and 5L50-E automatic transmissions is available in the above vehicles.

Service parts and labor operation codes are currently released for repairs, including the bell housing, pump assembly and all major internal components.

The transmission case (24) and parking pawl actuator (613) are not serviced separately at this time. If case replacement is necessary for any reason, the complete transmission assembly must be replaced.





Callouts 3, 6, 7, 8 (incl 9), 10, 11, 12, 15 (incl 14), 16, 17, 18, 19, 20, 21, 52, 600, 601, 607-612, and an overhaul gasket/seal kit are available through GMSPO.

The difference from standard full service approach is that each major sub-assembly is only serviced as a sub-assembly to minimize the need for selective spacers and washers required to properly rebuild these sub-assemblies.

Only three selective parts (5,14,22) are required to overhaul either a 5L40-E or 5L50-E instead of thirteen, which would be required for a complete overhaul servicing all sub-assemblies separately.

The Unit Repair Manual describes how to disassemble and reassemble each sub-assembly for inspection and cleaning purposes, but only complete sub-assemblies will be available as service parts.

Additional labor codes have been established and are also shown in the illustration.

- Using the correct labor code from the list below will help GM determine the root cause of any possible field concerns faster.
- Using the correct labor codes with the correct corresponding part numbers will insure warranty claims are paid.

Part Illustration Number	Labor Code	Description
3	K7040	Housing, Trans Conv
6	K7234	Clutch Assy, Direct and Reverse
7	K7572	Clutch, Forward/Coast
8 (includes 9)	K7364	Shaft, Sun Gear
10	K7578	Hub, Direct Clutch
12	K7595	Hub, Intermediate and O.D. and Reverse
15	K7586	Housing Assy, O.D. Clutch
16	K7585	Roller Assy, Low Clutch
18	K7381	Support, Center
19	K7551	Carrier Assy, Input and Reaction
21	K7325	Shaft, Output

[Current Training Courses Available on GM Training Website \(www.gmtraining.com\)](http://www.gmtraining.com)

- 17041.20W-R2 -- Automatic Transmission/Transaxle Diagnostics (Prerequisite)
- 17041.35W -- 5L40-E/5L50-E Auto Transmission
- 17041.36V -- 5L40-E/5L50-E A.T. Service Procedures

In Canada, refer to course # 17033.16 -- 5L40-E/5L50-E Auto Transmission.

GM bulletins are intended for use by professional technicians, NOT a "do-it-yourselfer". They are written to inform these technicians of conditions that may occur on some vehicles, or to provide information that could assist in the proper service of a vehicle. Properly trained technicians have the equipment, tools, safety instructions, and know-how to do a job properly and safely. If a condition is described, DO NOT assume that the bulletin applies to your vehicle, or that your vehicle will have that condition. See your GM dealer for information on whether your vehicle may benefit from the information.



WE SUPPORT
VOLUNTARY
TECHNICIAN
CERTIFICATION

© Copyright General Motors Corporation. All Rights Reserved.