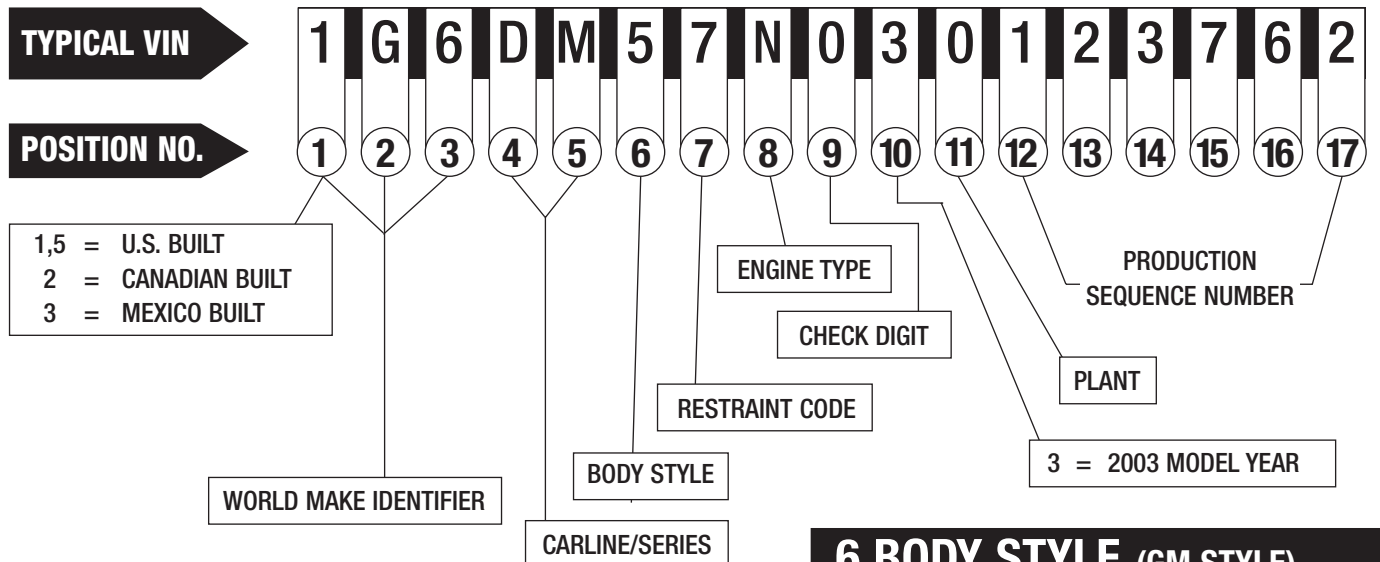




# 2003 PASSENGER CAR VIN SYSTEM



## 1-3 WORLD MAKE IDENTIFIER

<b>1 - CHEVROLET</b> 1G1, 2G1, 3G1	<b>4 - BUICK</b> 1G4, 2G4, 3G4
<b>2 - PONTIAC</b> 1G2, 2G2, 3G2, 5Y2	<b>6 - CADILLAC</b> 1G6
<b>3 - OLDSMOBILE</b> 1G3, 2G3	<b>8 - SATURN</b> 1G8

## 4-5 CARLINE/SERIES

<b>CHEVROLET</b> J/C - CAVALIER J/F - CAVALIER J/H - CAVALIER Z24 N/D - MALIBU N/E - MALIBU LS W/F - IMPALA W/H - IMPALA LS W/W - MONTE CARLO LS W/X - MONTE CARLO SS Y/Y - CORVETTE	<b>CADILLAC</b> D/G - CTS D/M - CTS D/R - CTS - RH DRIVE D/U - CTS - RH DRIVE K/D - DEVILLE K/E - DEVILLE LUXURY K/F - DEVILLE TOURING K/S - SLS K/Y - STS Y/V - XLR ROADSTER
<b>PONTIAC</b> H/X - BONNEVILLE SE H/Y - BONNEVILLE SLE H/Z - BONNEVILLE SSEI J/B - SUNFIRE N/E - GRAND AM SE N/F - GRAND AM SE1 N/G - GRAND AM SE2 N/V - GRAND AM GT1 N/W - GRAND AM GT S/L - VIBE S/M - VIBE, AWD S/N - VIBE, GT W/J - GRAND PRIX SE W/K - GRAND PRIX SE1 W/P - GRAND PRIX GT W/R - GRAND PRIX GTP	<b>SATURN</b> A/F - LEVEL 1 SEDAN MANUAL A/G - LEVEL 1 SEDAN AUTO A/J - LEVEL 2 SEDAN AUTO A/K - LEVEL 3 SEDAN MANUAL A/L - LEVEL 3 SEDAN AUTO A/M - LEVEL 2 COUPE MANUAL A/N - LEVEL 2 COUPE AUTO A/V - LEVEL 3 COUPE MANUAL A/W - LEVEL 3 COUPE AUTO A/Z - LEVEL 2 SEDAN MANUAL J/T - L200/LW200 MANUAL J/U - L200/LW200 AUTO J/W - L300, LW300
<b>OLDSMOBILE</b> G/R - AURORA G/S - AURORA N/F - ALERO GLS N/K - ALERO LEVEL I N/L - ALERO LEVEL II	
<b>BUICK</b> C/U - PARK AVENUE-ULTRA C/W - PARK AVENUE H/P - LE SABRE CUSTOM H/R - LE SABRE LIMITED W/B - REGAL LS W/F - REGAL GS W/S - CENTURY CUSTOM W/Y - CENTURY LIMITED	

## 6 BODY STYLE (GM STYLE)

1	TWO-DOOR COUPE (27, 37, 47, 57)
2	TWO-DOOR (07, 08, 77, 87)
3	TWO-DOOR CONVERTIBLE (67)
5	FOUR-DOOR SEDAN (19, 69)
6	FOUR-DOOR SEDAN (26, 29, 48, 68)
8	FOUR-DOOR STATION WAGON (35)
9	FOUR-DOOR STATION WAGON (75)

## 7 RESTRAINT CODES

1	ACTIVE (MANUAL) BELTS
2	ACTIVE (MANUAL) BELTS W/DRIVER & PASSENGER INFLATABLE RESTRAINT SYSTEM (FRONTAL)
4	ACTIVE (MANUAL) BELTS W/DRIVER & PASSENGER INFLATABLE RESTRAINT SYSTEM (FRONTAL & SIDE)
5	ACTIVE (MANUAL) BELTS W/FRONTAL INFLATABLE RESTRAINTS - DRIVER & PASSENGER AND SIDE INFLATABLE RESTRAINTS - DRIVER SIDE
6	ACTIVE (MANUAL) BELTS W/DRIVER & PASSENGER INFLATABLE RESTRAINTS (FRONTAL & SIDE). AUTOMATIC OCCUPANT SENSOR (PASSENGER)
7	ACTIVE (MANUAL) BELTS W/DRIVER & PASSENGER INFLATABLE RESTRAINTS (FRONTAL & SIDE). REAR PASSENGER INFLATABLE RESTRAINTS (SIDE)

## 8 ENGINE TYPE

CODE	ENG. OPT.	DISP.	CYL.	FUEL* SYSTEM	DIV. USAGE
C	L47	4.0L	V8	SFI	3
E	LA1	3.4L	V6	SFI	1,2,3
F	L61	2.2L	L4	MFI	1,2,3,8
G	LS1	5.7L	V8	MFI	1,2
H	LX5	3.5L	V6	SFI	3
J	LG8	3.1L	V6	SFI	1,2,4
K	L36	3.8L	V6	SFI	1,2,4
L	LNK	1.8L	L4	SFI	2
M	L95	1.4L	L4	MFI	1
M	LY9	2.6L	V6	MFI	6
N	LA3	3.2L	V6	MFI	6
R	L81	3.0L	V6	MFI	6,8
S	LS6	5.7L	V8	SFI	1
T	LD9	2.4L	L4	SFI	1,2
Y	LD8	4.6L	V8	SFI	6
1	L67	3.8L	V6	SFI	2,4
2	LY8	1.3L	L4	MFI	1
4	LN2	2.2L	L4	SFI	1,2
6	L42	2.2L	L4	MFI	1
8	LV6	1.8L	L4	MFI	2
9	L37	4.6L	V8	SFI	6

\*LEGEND  
MFI = MULTIPORT FUEL INJECTION  
SFI = SEQUENTIAL FUEL INJECTION

## 11 PLANT

B - LANSING MI	S - RAMOS ARIZPE MEXICO	Z - SPRING HILL TN	5 - BOWLING GREEN KY	9 - OSHAWA #1 ON
C - LANSING MI	U - HAMTRAMCK MI	0 - LANSING MI	7 - LORDSTOWN OH	
F - FAIRFAX II KS	Y - WILMINGTON DE	1 - OSHAWA #2 ON	8 - TILLSONBURG ON	
M - LANSING MI	Z - FREMONT CA	4 - ORION MI	(IPC)	

The information shown is correct at time of printing, but may be changed during model year.

To obtain additional copies, please fax request to 586-492-0292

General Motors Corporation, Service Operations, 30501 Van Dyke, Warren, MI 48090  
Litho in U.S.A. 9/02

©2002 General Motors Corporation. All Rights Reserved.

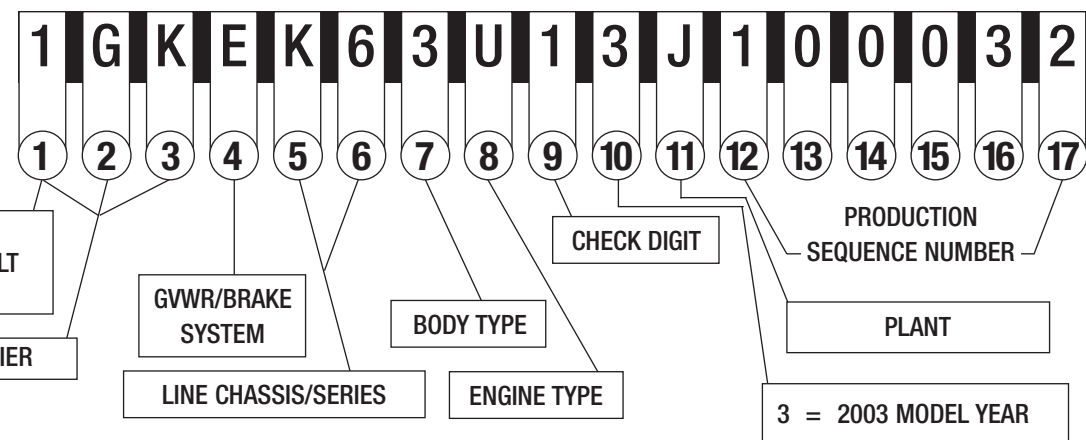
**GM**

## 2003 LIGHT DUTY TRUCK, MULTIPURPOSE PASSENGER VEHICLE (MPV) AND INCOMPLETE VEHICLE VIN SYSTEM

**TYPICAL VIN**

**POSITION NO.**

1, 4, 5 = U.S. BUILT  
2 = CANADIAN BUILT  
3 = MEXICO BUILT



### 1-3 WORLD MAKE IDENTIFIER

<b>CHEVROLET</b>	<b>SATURN</b>
1GB* 2GB* 3GB*	5GZ
1GC 2GC 3GC	<b>CADILLAC</b>
1GA** 1GN 3GN	1GE* 1GY 3GY
2CN	<b>PONTIAC</b>
<b>GMC</b>	1G5* 1GM 3G7
1GD* 2GD* 3GD*	<b>ISUZU</b>
1GT 2GT 3GT	1GG* 4NU
1GJ** 1GK 3GK	<b>HUMMER</b>
<b>BUICK</b>	5GR
3G5 4GL*	
<b>OLDSMOBILE</b>	
1GH	

\* Incomplete Vehicle  
\*\* Van with 4th Seat

### 4 GVWR/BRAKE SYSTEM

CODE	GVWR RANGE (IN POUNDS)	BRAKE SYSTEM
A	0 - 3000	HYD
B	3001 - 4000	HYD
C	4001 - 5000	HYD
D*	5001 - 6000	HYD
E**	6001 - 7000	HYD
F**	7001 - 8000	HYD
G	8001 - 9000	HYD
H	9001 - 10000	HYD
J	10001 - 14000	HYD
K	14001 - 16000	HYD
L	16001 - 19500	HYD
M	19501 - 26000	AIR/HYD

\* BUICK & CHEVROLET COMMERCIAL BODY/CHASSIS  
\*\* CADILLAC COMMERCIAL BODY/CHASSIS

### 5-6 LINE CHASSIS/SERIES

CHEVROLET/GMC*	X1	CHEV-VENTURE APV 4x2, LUXURY EXT. W/B
B/9 INCOMPLETE (CHEVROLET)	X2	CHEV-VENTURE APV 4x2 ECONOMY EXT. W/B
C/1 FULL SIZE TRUCK 4x2, 1500 (1/2 TON)	<b>BUICK</b>	
C/2 FULL SIZE TRUCK 4x2, 2500 (3/4 TON)	A/0 RENDEZVOUS SRV 4x2	
C/3 FULL SIZE TRUCK 4x2, 3500 (1 TON)	B/0 RENDEZVOUS SRV 4x4	
C/5 GMC 3 TON (MEX ONLY)	B/9 INCOMPLETE	
C/6 FULL SIZE TRUCK 4x2, 1500 (1/2 TON) LUXURY	<b>CADILLAC</b>	
C/7 FULL SIZE TRUCK 4x2, 2500 (3/4 TON) LUXURY	H/0 INCOMPLETE (HEARSE)	
C/8 FULL SIZE TRUCK 4x2, 3500 (1 TON) LUXURY	H/9 INCOMPLETE (LIMOUSINE)	
K/1 FULL SIZE TRUCK 4x4, 1500 (1/2 TON)	C/6 ESCALADE, 4x2 1500 (1/2 TON) LUXURY	
K/2 FULL SIZE TRUCK 4x4, 2500 (3/4 TON)	K/6 ESCALADE, ESCALADE ESV, ESCALADE EXT 4x4 1500 (1/2 TON) LUXURY	
K/3 FULL SIZE TRUCK 4x4, 3500 (1 TON)	<b>OLDSMOBILE</b>	
K/5 GMC 3 TON (MEX ONLY)	S/1 BRAVADA 4x2 (1/2 TON)	
K/6 FULL SIZE TRUCK 4x4, 1500 (1/2 TON) LUXURY	S/6 BRAVADA 4x2 (1/2 TON) LUXURY	
K/7 FULL SIZE TRUCK 4x4, 2500 (3/4 TON) LUXURY	T/1 BRAVADA 4x4 (1/2 TON)	
K/8 FULL SIZE TRUCK 4x4, 3500 (1 TON) LUXURY	T/6 BRAVADA 4x4 (1/2 TON) LUXURY	
E/1 CHEV-TRACKER 4x2	V/0 SILHOUETTE APV 4x4	
E/6 CHEV-TRACKER 4x2, LT (B57)	V/1 SILHOUETTE APV 4x4 LUXURY	
J/1 CHEV-TRACKER 4x4	V/2 SILHOUETTE APV 4x4 ECONOMY	
J/2 CHEV-TRACKER 4x4, ECONOMY (X81)	X/0 SILHOUETTE APV 4x2 EXT. W/B	
J/6 CHEV-TRACKER 4x4, LT (B57)	X/1 SILHOUETTE APV 4x2 LUXURY EXT. W/B	
J/7 CHEV-TRACKER 4x4, ZR2 SPORT	X/2 SILHOUETTE APV 4x2 ECONOMY EXT. W/B	
G/1 EXPRESS, SAVANA 4x2, 1500 (1/2 TON)	<b>PONTIAC</b>	
G/2 EXPRESS, SAVANA 4x2, 2500 (3/4 TON)	A/0 AZTEK SRV 4x2	
G/3 EXPRESS, SAVANA 4x2, 3500 (1 TON)	B/0 AZTEK SRV 4x4	
G/6 EXPRESS, SAVANA 4x2, 1500 (1/2 TON) LUXURY	U/0 MONTANA APV 4x2	
G/7 EXPRESS, SAVANA 4x2, 2500 (3/4 TON) LUXURY	U/1 MONTANA APV 4x2 LUXURY	
G/8 EXPRESS, SAVANA 4x2, 3500 (1 TON) LUXURY	U/2 MONTANA APV 4x2 ECONOMY	
H/1 EXPRESS, SAVANA AWD, 1500 (1/2 TON)	V/0 MONTANA APV 4x4	
H/2 EXPRESS, SAVANA AWD, 2500 (3/4 TON)	V/1 MONTANA APV 4x4 LUXURY	
H/6 EXPRESS, SAVANA AWD, 1500 (1/2 TON) LUXURY	V/2 MONTANA APV 4x4 ECONOMY	
H/7 EXPRESS, SAVANA AWD, 2500 (3/4 TON) LUXURY	X/0 MONTANA APV 4x2 EXT. W/B	
M/1 ASTRO, SAFARI VAN 4x2 (1/2 TON)	X/1 MONTANA APV 4x2 LUXURY EXT. W/B	
M/6 ASTRO, SAFARI VAN 4x2 LUXURY	X/2 MONTANA APV 4x2 ECONOMY EXT. W/B	
L/1 ASTRO, SAFARI VAN 4x4 (1/2 TON)	<b>SATURN</b>	
L/6 ASTRO, SAFARI VAN 4x4 LUXURY	Z/2 FWD MANUAL	
S/1 S-10, SSR, BLAZER, TRAILBLAZER TRAILBLAZER EXT, SONOMA, ENVOY, ENVOY XL 4x2 (1/2 TON)	Z/3 FWD AUTO	
S/6 S-10, BLAZER, TRAILBLAZER TRAILBLAZER EXT, SONOMA, ENVOY, ENVOY XL 4x2 (1/2 TON) LUXURY	Z/4 AWD 4 CYL.	
T/1 S-10, BLAZER, TRAILBLAZER TRAILBLAZER EXT, SONOMA, ENVOY, ENVOY XL 4x4 (1/2 TON)	Z/5 FWD 6 CYL.	
T/6 S-10, BLAZER, TRAILBLAZER TRAILBLAZER EXT, SONOMA, ENVOY, ENVOY XL 4x4 (1/2 TON) LUXURY	Z/6 AWD 6 CYL.	
U/0 CHEV-VENTURE APV 4x2	<b>HUMMER</b>	
U/1 CHEV-VENTURE APV 4x2 LUXURY	N/2 FULL SIZE 4x4 SUV, (3/4 TON) H2	
U/2 CHEV-VENTURE APV 4x2 ECONOMY	<b>ISUZU</b>	
V/0 CHEV-VENTURE APV 4x4	S/1 ASCENDER 4x2 (1/2 TON)	
V/1 CHEV-VENTURE APV 4x4 LUXURY	T/1 ASCENDER 4x4 (1/2 TON)	
V/2 CHEV-VENTURE APV 4x4 ECONOMY		
X/0 CHEV-VENTURE APV 4x2 EXT. W/B		

\* LINE/CHASSIS DESCRIPTION INCLUDES ALL FULL SIZE CHEVROLET AND GMC TRUCK MODELS

### 7 BODY TYPE

- 0 - COMMERCIAL CHASSIS**  
(CHEVROLET/BUICK/CADILLAC)
- 1 - COMMERCIAL SPECIAL AND RV CUTAWAY**  
(INCLUDES CHEVROLET EXPRESS COMMERCIAL, GMC SAVANA CARGO SPECIAL AND CAMPER SPECIAL)
- 2 - FORWARD CONTROL**
- 3 - FOUR-DOOR CAB/UTILITY**  
(INCLUDES BLAZER, TRAILBLAZER, BRAVADA, ENVOY, TRACKER, FULL SIZE - YUKON, TAHOE, AVALANCHE, DENALI ESCALADE, ESCALADE EXT, H2 AND CREW CAB)
- 3 - FOUR-DOOR ALL PURPOSE VEHICLE**  
(MONTANA, VENTURE, SILHOUETTE, AZTEK, RENDEZVOUS [SRV], SATURN SUV)
- 4 - TWO-DOOR CAB**  
(S10, SSR, SONOMA, SIERRA, SILVERADO)
- 5 - VAN**  
(EXPRESS, SAVANA, ASTRO, SAFARI)
- 6 - SUBURBAN, YUKON XL, ENVOY XL, TRAILBLAZER EXT, ASCENDER**
- 7 - MOTOR HOME CHASSIS**
- 8 - TWO-DOOR UTILITY**  
(BLAZER, TRACKER)
- 9 - EXTENDED CAB/EXTENDED VAN**  
(S10, SONOMA, SIERRA, SILVERADO, ASTRO, SAFARI, EXPRESS AND SAVANA)

### 8 ENGINE TYPE

CODE	ENG. OPT.	DISP.	CYL.	FUEL SYSTEM**
B	L81	3.0L	V6	MFI
C	L34	2.0L	L4	MFI
D	L61	2.2L	L4	MFI
E	LA1	3.4L	V6	MFI
G	L18	8.1L	V8	MFI
H	LN2	2.2L	L4	MFI
J	L29	7.4L	V8	MFI
L	LH3	4.1L	L6	MFI
N	LQ9	6.0L	V8	MFI
P	LM4	5.3L	V8	SFI
S	LL8	4.2L	L6	MFI
T	LM7	5.3L	V8	MFI
U	LQ4	6.0L	V8	MFI
V	LR4	4.8L	V8	MFI
W	L35	4.3L	V6	CPI
X	LU3	4.3L	V6	MFI
Y*	LD8	4.6L	V8	MFI
Z	L59	5.3L	V8	MFI
1	LB7	6.6T	V8	DSL
4	LE8	2.5L	V6	MFI
9*	L37	4.6L	V8	MFI

\* USED ONLY IN BUICK, CHEVROLET & CADILLAC PASSENGER CAR - DERIVED INCOMPLETE VEHICLES

\*\* DSL = DIESEL, MFI = MULTIPORT FUEL INJECTION, CPI = CENTRAL PORT INJECTION, T = TURBO

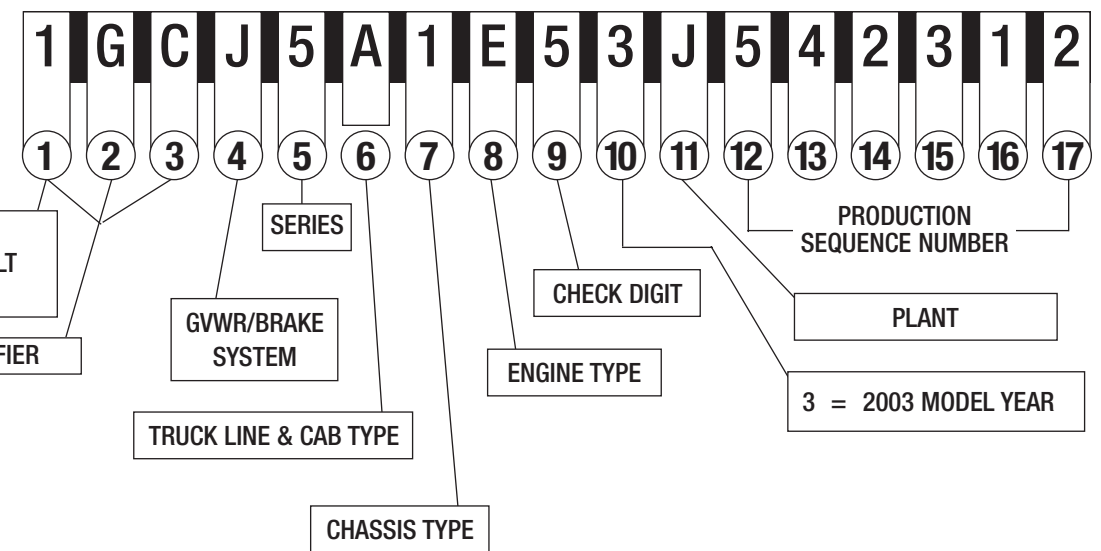
**GM**

## 2003 MEDIUM DUTY TRUCK AND INCOMPLETE VEHICLE VIN SYSTEM

**TYPICAL VIN**

**POSITION NO.**

1, 4 = U.S. BUILT  
2 = CANADIAN BUILT  
J = JAPAN BUILT



### 1-3 WORLD MAKE IDENTIFIER

<b>-CHEVROLET</b>	<b>-ISUZU</b>
1GC 2GC	4GT*
1GB* 2GB*	
J8B*	
<b>-GMC</b>	
1GT 2GT	
1GD* 2GD*	
J8D*	

\* Incomplete Vehicle

### 6 TRUCK LINE & CAB TYPE (MODEL)

- A - FORWARD/TILTMETER MEDIUM, TILT, 72.0 BBC (W5)
- B - FORWARD/TILTMETER MEDIUM, TILT, 67.9 BBC (W4)
- D - C SERIES, CREW CAB (C4E - C8E)
- E - C SERIES, CONVENTIONAL CAB (C4C - C8C)
- F - C SERIES, CUTAWAY COMMERCIAL CAB (C4V - C8V)
- G - C SERIES, CUTAWAY MOTORHOME (C4U/C5U)
- J - W SERIES NPR/NPQ CREW CAB, 106.0 BBC (W4/W5)

BBC = BUMPER TO BACK OF CAB

### 4 GVWR/BRAKE SYSTEM

CODE	GVWR RANGE (IN POUNDS)	BRAKE SYST.
A	9001 - 10,000	HYD
B	10,001 - 14,000	HYD
C	14,001 - 16,000	HYD
D	14,001 - 16,000	AIR
E	16,001 - 19,500	HYD
F	16,001 - 19,500	AIR
G	19,501 - 23,500	HYD
H	19,501 - 23,500	AIR
J	23,501 - 26,000	HYD
K	23,501 - 26,000	AIR
L	26,001 - 33,000	HYD
M	26,001 - 33,000	AIR
N	33,001 - 40,500	HYD
P	33,001 - 40,500	AIR
R	40,501 - 48,500	HYD
S	40,501 - 48,500	AIR
T	48,501 - 58,000	AIR
V	58,001 - 69,500	AIR
X	GLIDER KIT	—

### 5 SERIES

- 4 - 4500 SERIES (W4)
- 5 - 5500 SERIES (C5/W5)
- 6 - 6500 SERIES (FB6/W6)
- 7 - 7500 SERIES (D7/FB7/W7)
- 8 - 8500 SERIES (C8/T8)

### 7 CHASSIS TYPE

- 0 - GLIDER KIT
- 1 - 4 X 2 (2 AXLES - 1 DRIVING)
- 4 - 6 X 4 (3 AXLES - 2 DRIVING)

### 8 ENGINE TYPE

- B - ISUZU 7.2L L6 DI TURBO DIESEL (LC8)
- C - CAT 7.2L L6 TURBO ELECTRONIC (LG5)
- E - GM 8.1L V8 MFI GASOLINE (L18)
- J - CAT 6.6L L6 3116 DIESEL (LX0)
- R - GM 5.7L V8 CPI GAS (L31)
- X - GLIDER KIT LESS ENGINE
- 1 - ISUZU 6.6L V8 DI TURBO DIESEL, HO (LB7)
- 3 - ISUZU 7.8L L6 DI TURBO DIESEL, I/C (LG4)

### 11 PLANT

B - BALTIMORE	MD	L - LANSING	MI	1 - WENTZVILLE	MO
B - LANSING	MI	M - TOLUCA	MEXICO	2 - MORAIN	OH
D - DORAVILLE	GA	R - ARLINGTON	TX	3 - KAWASAKI	JAPAN
E - PONTIAC	MI	S - RAMOS ARIZPE	MEXICO	6 - INGERSOLL	ON
F - FLINT	MI	S - SPRINGHILL	TN	6 - OKLAHOMA CITY	OK
G - SILAO	MEXICO	T - SHREVEPORT	LA	7 - FUJISAWA	JAPAN
H - MISHAWAKA	IN	Z - FORT WAYNE	IN	8 - SHREVEPORT	LA
J - JANESVILLE	WI			8 - TILLSONBURG	ON
K - LINDEN	NJ	1 - OSHAWA	ON	(IPC)	